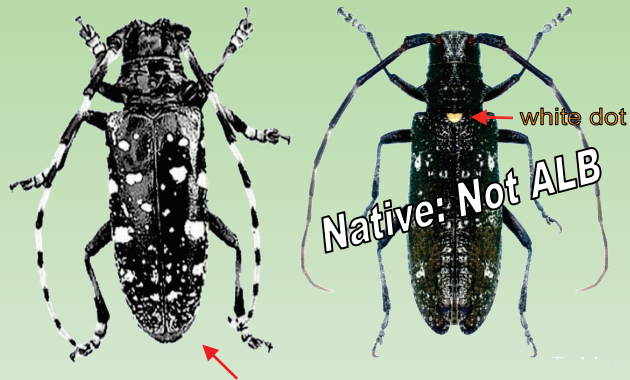


(UN)WANTED

Asian Longhorned Beetle



NOT KNOWN TO OCCUR IN MAINE

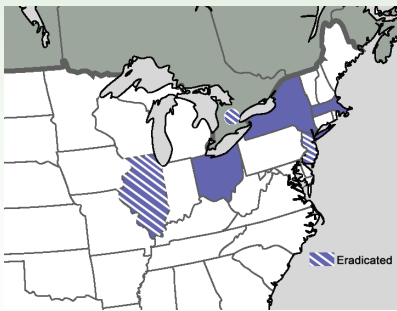
Asian longhorned beetle (ALB) is a large woodboring beetle that attacks a variety of healthy hardwood trees, primarily **MAPLE, ELM, WILLOW, BIRCH, HORSECHESTNUT**



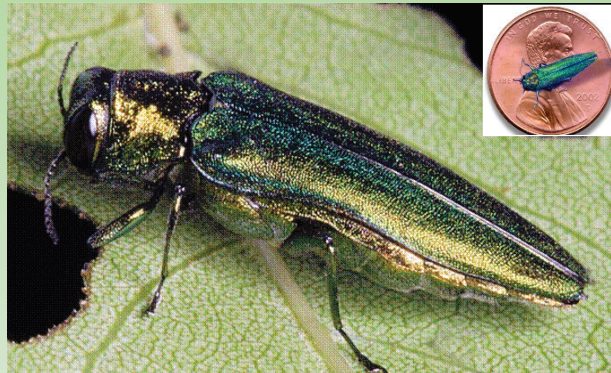
Exit holes Egg sites Frass Adult feeding damage

ALB was accidentally introduced from Asia, and has been discovered in 5 states and Toronto, Canada since 1996.

ALB has not been found in Maine.



Emerald Ash Borer



FOUND in MAINE in 2018

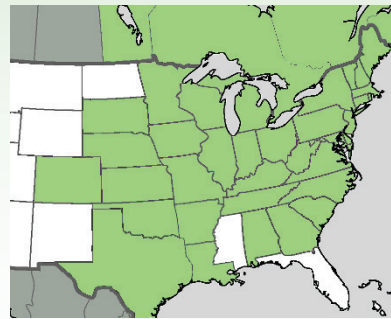
Emerald ash borer (EAB) is a small woodboring beetle that quickly kills **ASH** trees. Look for these signs on **ASH** trees...



Bark splits D-shaped exit holes "Blonding" Epicormic shoots
S-shaped tunnels

EAB was accidentally introduced from Asia, and has been discovered in 35 states since 2002.

EAB was found in York and Aroostook counties in 2018.



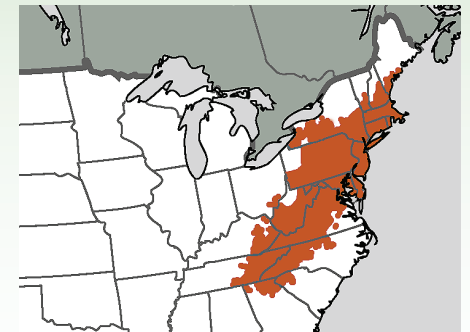
Hemlock Woolly Adelgid



Hemlock woolly adelgid (HWA) is an aphid-like insect that kills eastern hemlock. HWA pierces hemlock with its mouthparts, injects the tree with toxic saliva and sucks out nutrient rich plant juices. HWA affects only **HEMLOCK**.

On Hemlock, Look For:

- ⇒ White woolly masses at the base of needles on undersides of hemlock twigs, 1/16-1/8 inch diameter. Most visible late fall – early summer
- ⇒ Off-color needles, often with a grayish cast
- ⇒ Premature needle drop and twig dieback



Report

If you think you have seen any of these pests, or the depicted signs on the trees, please report your findings to: bugwatchme.agr@maine.gov or (207) 287-2431