

MAINE DEPARTMENT
OF EDUCATION (DOE)

Assessment Lunch & Learn Office Hours

April 10, 2024

Please post questions you may have in the chat box – we will work to answer them during the session and add them to a Q&A document.

We will begin shortly.

Presented by: The Assessment Team





Jodi Bossio-Smith

Director of Assessment
Interim Alternate and
ELP Assessments Coordinator



Dr. Regina Lewis

NAEP & International Assessments



Krista Averill

General Assessments
Coordinator



Leah Jarvis

Business Analyst

Welcome to the Maine DOE

Meet Our Team

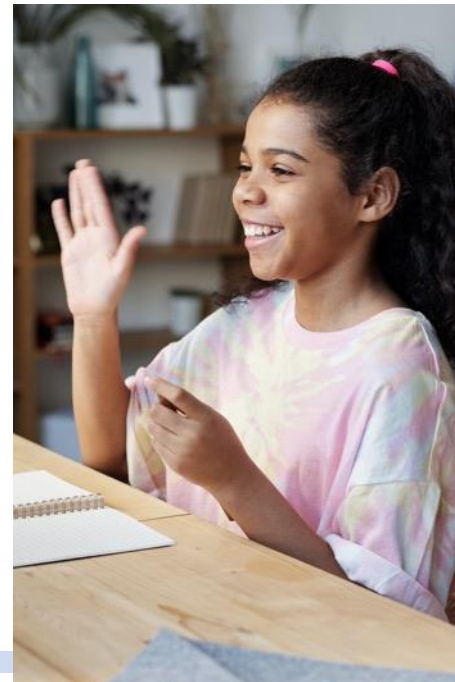
Assessment

Today's Agenda

General Updates:

- Maine Through Year and
Maine Science
Assessments
- National and
International
Assessments
- ACCESS
- MSAA

Mission & Vision



To promote the best learning opportunities for all Maine students by providing information, guidance, and support to our schools, educators, and leaders and by providing adequate and equitable school funding and resources.

Technical Assistance

[SAU Request Form for Technical Assistance](#)

Available to all SAUs upon request

Targeted technical assistance continues to focus on participation across the MEA



Assessment Name	Assessment Dates	Window	Delivery Method	Intended For
Access for ELLs (English Language Proficiency)	January 8, 2024 - March 8, 2024	9 Weeks	Kindergarten: Paper Grade 1-12: Online	English Learners K-12
Alternate Access for ELLs (English Language Proficiency)	January 8, 2024 - March 8, 2024	9 Weeks	Paper/Pencil	English Learners in Grades K-12 with Significant Cognitive Disabilities
Maine Through Year Assessment: Mathematics & Reading	Fall (Required): October 2, 2023 - November 3, 2023 Winter (Optional): January 2, 2024 - February 16, 2024 Spring (Required): April 22, 2024 - May 31, 2024	Fall: 4 Weeks Winter and Spring: 6 Weeks	Online	Students in Grades 3-8, & 2nd Year of High School
Maine Science Assessment	May 13, 2024 - May 24, 2024	2 Weeks	Online	Grades 5, 8, & 3rd Year of High School
MSAA: Mathematics & ELA/Literacy	March 11, 2024 - April 26, 2024	6 Weeks	Online	Students with Significant Cognitive Disabilities; Grades 3-8, & 3rd Year of High School
MSAA Science	March 11, 2024 - April 26, 2024	6 Weeks	Online	Students with Significant Cognitive Disabilities; Grades 5, 8, & 3rd Year of High School

Maine Educational Assessments (MEA)

2023-24 Assessment Calendar

National & International 2023-24 Assessment Calendar

Assessment Name	Assessment Dates	Intended For
National Assessment of Educational Progress (NAEP)	January 29, 2024 - March 22, 2024	Mathematics and Reading Grades 4, 8, & 12 and Science Grade 8 at sampled schools
Teaching and Learning International Survey (TALIS)	March - April 2024	International survey of principals and teachers at grades 7, 8, and 9 at sampled schools
Program for International Students Assessment (PISA) Field Test	March - April 2024	Math, Reading, and Science age 15 at sampled schools
International Computer Literacy & Information Literacy Study (ICILS)	N/A	Grade 8, Computer & Information Literacy at sampled schools
Progress in International Reading Literacy (PIRLS)	N/A	Grade 4 Reading achievement in literary experience and reading to acquire and use information at sampled schools
Trends in Mathematics & Science Study (TIMSS)	N/A	Grades 4 & 8 Mathematics & Reading at sampled schools

Data Requests

- Suppressed data for 2020-21 to 2022-23 are currently available in the [ESSA Dashboard](#).
- Legacy data (suppressed data for some years prior to those available in the ESSA Dashboard) are available [here](#).
 - Legacy data currently posted does not include 2015-16 to 2018-19.
- To access data from unavailable academic years and/or unsuppressed data, please use the “Submit a Data Request” link at the bottom of the [Data Warehouse page](#).
- SAUs have access to
 - Spring 2023 Maine Science Assessment data in the Kite Reporting Platform.
 - Maine Through Year Assessment data in Acacia and MAP Growth (optional).
 - Spring 2023 WIDA ACCESS data in WIDA AMS.

General Assessments

Updates that Apply to BOTH Maine Through Year and Maine Science

General Assessments: Maine Through Year & Maine Science

Preparing New Proctors

All proctors are required to complete the following once per academic year.

Assessment Security Training

- [Assessment Security Overview Training Webisode](#) (5 minutes)
- [Assessment Irregularities! What Now? Security Training Webisode](#) (3 minutes)

MEA Assessment Security & Data Privacy Agreement

Appendix E (page 30) of the [Assessment Security Handbook](#)

[Maine Through Year Assessment Proctor Training Video](#) (9 minutes)

NEW! [Maine Science Assessment Proctor Training Video](#) (9 minutes)

General Assessments: Maine Through Year & Maine Science

Grade 5

Reading	Math	Science
1. Quote	1. Perpendicular	1. Evaporate/evaporation
2. Structure	2. Axis/axes	2. Quantity
3. Inference	3. Coordinate	3. Reflectivity/reflective
4. Fiction/fictional	4. Intersection	4. Conductivity/conductive
5. Summarize/summary	5. Quadrant	5. Electrical
6. Conclusion	6. Attribute	6. Thermal
7. Contrast	7. Classification	7. Solubility/soluble
8. Narrator	8. Polygon	8. Investigation
9. Genre	9. Isosceles	9. Gravity/gravitational
10. Similarity	10. Scalene	10. Ecosystem
11. Difference	11. Hierarchy	11. Organism
12. Figurative	12. Convert/conversion	12. Decomposer
13. Simile	13. Rectangular	13. Geosphere
14. Metaphor	14. Parentheses	14. Biosphere
15. Definition	15. Symbol	15. Hydrosphere
16. Dictionary	16. Evaluate	16. Atmosphere
17. Glossary	17. Numerical	17. Percentage
18. Thesaurus	18. Corresponding	18. Reservoir
19. Synonym	19. Exponent	19. Distribution
20. Antonym	20. Thousandth	20. Glacier

Supplemental Text-to-Speech Guidance

For students without TTS or read aloud as an accommodation on an IEP, 504 plan, or ILAP:

If educators perceive that a student would struggle to decode two or more words from their grade-level list, text-to-speech is an appropriate designated support for that student.

General Assessments: Maine Through Year & Maine Science

Student Chosen Names

Chosen names will appear on test tickets, within the assessment lockdown browser, and on reports.

Maine Through Year Assessment

- **Before logging into the assessment:** Reach out to Krista Averill at Krista.Averill@maine.gov with the SSID and chosen first and/or last name. Alternately, reach out to NWEA Maine Partner Support at (855) 430-1777.
- **After logging into the assessment:** This requires an assessment reset. Reach out to NWEA Maine Partner Support at (855) 430-1777.
- **NOTE:** The first initial and last name in Synergy are used to create the student's username on their test ticket. If you need to change both the student's username and the student's name on their test ticket, please reach out to NWEA Maine Partner Support at (855) 430-1777.
 - Example: KAVER1234 (Krista Averill #)

General Assessments: Maine Through Year & Maine Science

Student Chosen Names

Chosen names will appear on test tickets, within the assessment lockdown browser, and on reports.

Maine Science Assessment

Use the Preferred Name field in ADAM.

(Maine Science Support: [Understanding the Preferred Name fields in ADAM](#))

Maine Through Year Assessment

April 22 – May 31

Maine Through Year Assessment

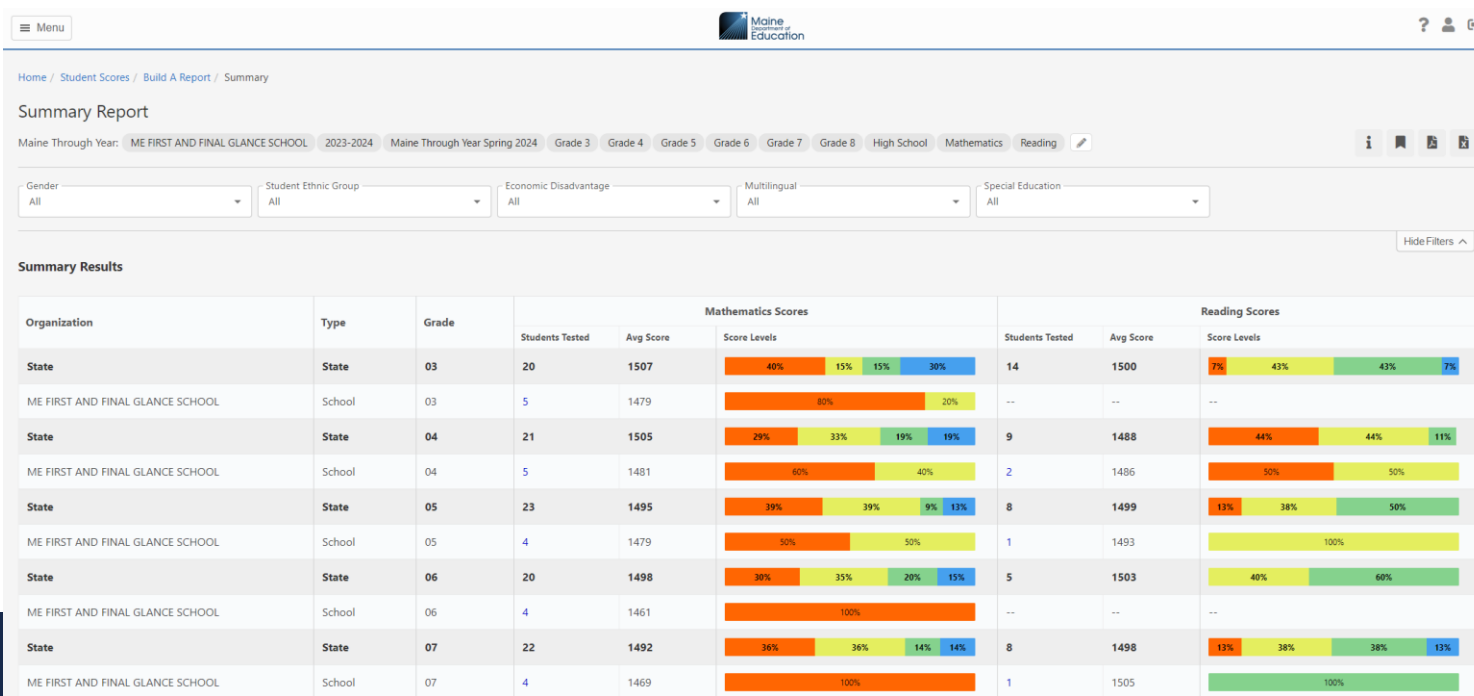
Helpful Hint for Viewing Rosters in Acacia

- Consult your NEO rosters for your official list of eligible students required to participate in the Maine Through Year Assessment.
- Due to a quirk of the MAP Growth – Acacia sync, any student in grades 3 through 12 with a 9-digit ID number in MAP Growth was *created via the sync* in Acacia, even if they are not on the Maine DOE’s assessment rosters.
- NWEA has indicated that this has been resolved and should not occur in 2024-25.
- For spring 2024, if you have verified that a student should not be in Acacia you can either
 - 1) disregard the student,
 - 2) reach out to Krista Averill to have the student transferred to a “placeholder school” (please limit this to less than 10 students as these transfers are completed manually), OR
 - 3) reach out to NWEA Maine Partner Support for assistance.

Maine Through Year Assessment

Spring 2024 – New Acacia Reports Available!

Comparison Summary Report: Spring Only



Maine Through Year Assessment

Spring 2024 – New Acacia Reports Available!

Student Results File: Fall, Winter, & Spring

Downloadable csv

Similar to Student Score Data File, but regenerates every few hours throughout the assessment window

Data includes:

- Student data (enrollment, demographics, etc.)
- Test event data (including student engagement metrics)
- Overall scale score reporting category data
- RIT and instructional area data
- Accommodations

Professional Learning Opportunities

Provided by NWEA & Maine DOE

MAINE THROUGH YEAR ASSESSMENT



Spring 2024 Professional Learning Opportunities

The spring 2024 administration window for the Maine Through Year Assessment is **April 22 to May 31**. Student's score results will be available in the Acacia platform **within 72 hours**. NWEA and Maine DOE have developed several professional learning opportunities at various levels of complexity to aid educators in understanding and utilizing Through Year Assessment score results.

STRUCTURE OF THE MAINE THROUGH YEAR ASSESSMENT

An introduction to the structure of the fall, winter, and spring administrations of the Maine Through Year Assessment, including its diagnostic and summative components, adaptivity, and score types.

[Video Link](#) (5 minutes)

ACCESSING REPORTS

Learn how to access reports in Acacia and MAP Growth, including where to find reports and an overview of report features. **In April 2024, two new reports will be available to administrators!** There are separate PL sessions for administrators and teachers. Click [here](#) for dates and times.

UNDERSTANDING SCORES: RIT AND MAINE-SPECIFIC SCALE SCORE

Develop a deeper understanding of RIT scores, Instructional Area RIT, and the Maine-specific scale score and how each contributes to a fuller picture of student learning and achievement.

This session will be most helpful to those who are either about to access or already have access to their Spring 2024 student results data.

Dates: [May 2](#), [May 21](#), BOTH 3:30-5:00 PM
(Select a date to register.)

USING MULTIPLE DATA SOURCES TO INFORM INSTRUCTION

Consider triangulation of data and integration of classroom formative assessments to inform instruction, with a focus on responsive planning. *This session focuses on examining students' RIT scores, in particular Instructional Area RIT.*

Dates: April 1, April 24, May 6, May 14, ALL 3:30-4:30 PM
[Registration Link](#)

USING ACHIEVEMENT LEVEL DESCRIPTORS TO ENSURE RIGOR

Make connections between rigor, Depth of Knowledge, Bloom's Taxonomy, cognitive complexity, and Achievement Level Descriptors in order to build a culture of learning. *This session is designed to meet the needs of all participants, regardless of prior experience with the Maine Through Year Assessment.*

Dates: April 10, April 30, May 2, May 8, ALL 3:30-4:30 PM ([Registration Link](#))

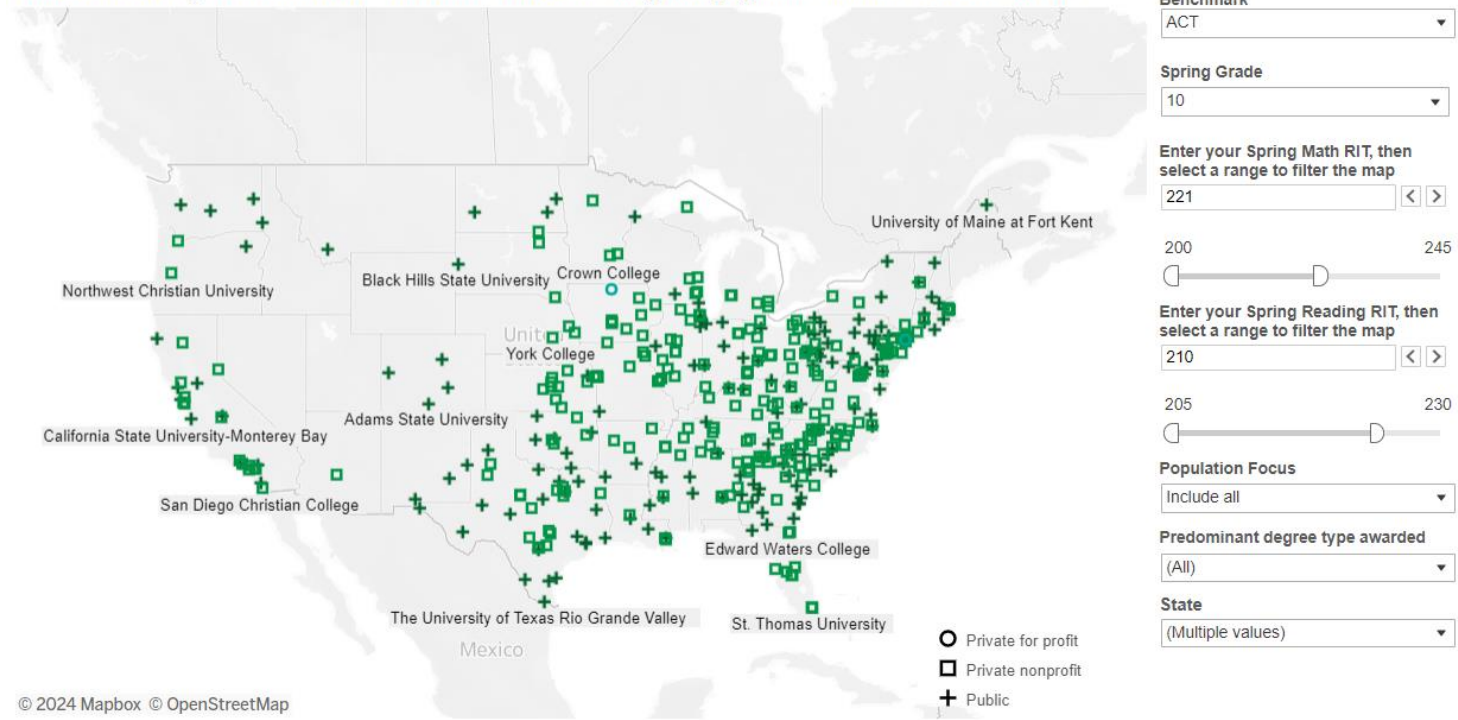
Mapping the Road to College

College Explorer Tool

- Search by RIT Range (shown here)
- Search for Schools
- College Major Explorer

Links spring RIT scores to college readiness benchmarks, such as the ACT and SAT, as well as to the projected median RITs for students pursuing specific college majors.

Click on a college to learn more. *The fields below the map will populate once a choice is made.*



Maine Through Year Assessment

Math Reference Sheet Translations

The Math Reference Sheet has been translated into Maine's top languages and can now be printed for multilingual learners.

You can find the translations under the Content drop-down menu on our website: https://www.maine.gov/doe/Testing_Accountability/MECAS/NWEA

[Math Reference Sheet](#): This reference/formula sheet is provided to all students on the math assessment in the fall, winter (optional), and spring. This is accessible within the assessment platform, and paper copies may be distributed to students. Please see below for **Math Reference Sheet translations**:

- [Arabic](#)
- [Chinese](#)
- [French](#)
- [Khmer](#)
- [Kinyarwanda](#)
- [Lingala](#)
- [Portuguese](#)
- [Somali](#)
- [Spanish](#)
- [Vietnamese](#)

Maine Through Year Assessment

Helpful Hint for Paired Passages on the Reading Assessment

Direct students to read the question(s) before the passages. The question will specify which passage to refer to.

Maine DOE's review of the spring 2024 online adaptive reading test revealed that sometimes, due to the computer adaptive engine, students will only receive questions about one of the two paired passages.

NWEA will provide statistics around this scenario following the spring 2024 administration.

Maine Through Year Assessment: *Whom do I contact?*

NWEA Maine Partner Support

(855) 430-1777

techsupport@nwea.org

- Technical issues with the Acacia platform
- Technical issues with the State Solutions Secure Browser
- Technical issues with the MARC (MAP Growth) platform, including rostering in MARC
- Support with pre-administration activities in the Acacia platform (e.g., creating groups or assigning accommodations)
- Support administering the online assessment
- Information regarding procedures for students taking accommodated paper-based forms
- SAU Data Clean-Up Tasks

Maine DOE MEDMS Helpdesk

MEDMS.Helpdesk@maine.gov

(207) 624-6896

- Fixing a student who incorrectly appears or does not appear in your assessment roster in NEO
- Help determining if a student is eligible for the Maine Through Year Assessment, based on information entered by the SAU into Synergy

Maine DOE Assessment Team

Krista.Averill@maine.gov

(207) 215-6528

- Questions related to assessment content, accessibility, scoring, and reporting
- Policy-related questions
- Fixing a student who appears on your assessment roster in NEO but does not appear in Acacia
 - *Please wait at least 36 hours after making the update in Synergy.*
- Any problems that NWEA Maine Partner Support or MEDMS Helpdesk are not able to resolve

Maine Science Assessment

May 13 – May 24

Maine Science Assessment

Spring 2024 Trainings – Save the Date!

Rostering in ADAM & Accessibility (NEW DATE)

- Thursday, April 11th, 3:00-4:30 PM ([Registration Link](#))

Administration, Proctoring, & Accessibility

- Thursday, April 25th, 3:00-4:30 PM ([Registration Link](#))

All sessions will be recorded, and the recording will be posted on the Maine Science Support webpage: <https://mescience.zendesk.com/hc/en-us>

Maine Science Assessment

Resources

Manuals and Guides

The [Spring 2024 manuals and guides](#) are now live on the [Maine Science Support Page](#).

Practice Tests

To access the tests, please use the browser-based ADAM, <https://adamexam.com/tester/>, and enter the tepracticest codes found [here](#).

NEW! Released Items

Released items are available on Maine DOE's [Maine Science Assessment](#) webpage.

Additional Resources

Additional Maine Science Assessment resources, including assessment blueprints and achievement level descriptors, can be found on Maine DOE's [Maine Science Assessment](#) webpage.

Maine Science Assessment: *Whom do I contact?*

Maine Science Support

- Technical issues with the ADAM lockdown browser or platform
- Support with pre-administration activities in the ADAM platform (e.g., creating classes or assigning accommodations)
- Support administering the online assessment, both within the proctor dashboard and the ADAM lockdown browser
- Information regarding procedures for students taking accommodated paper-based forms
- Fixing a student who appears on your assessment roster in NEO but does not appear in ADAM (*The team will seek Maine DOE approval.*)

Kite Service Desk

Kite-support@ku.edu

(855) 277-9752

- Accessing reports

Maine DOE MEDMS Helpdesk

MEDMS.Helpdesk@maine.gov

(207) 624-6896

- Fixing a student who incorrectly appears or does not appear in your assessment roster in NEO
- Help determining if a student is eligible for the Maine Through Year Assessment, based on information entered by the SAU into Synergy

Maine DOE Assessment Team

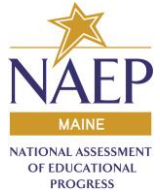
Krista.Averill@maine.gov

(207) 215-6528

- Questions related to assessment content, accessibility, scoring, and reporting
- Policy-related questions
- Any problems that Maine Science Support, Kite Service Desk, or MEDMS Helpdesk are not able to resolve

National and International Assessments

National and International Assessments - NAEP



Thank you to all the schools that participated in NAEP 2024

NAEP 2024 Update:

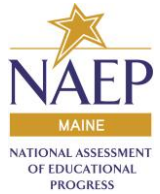
- Window closed March 22nd
- *In person Technical Assistance Assessment Administration Observations provided the opportunity to meet many school coordinators, principals, and technology staff.*

NAEP Transitioning to School Based Devices – Next Steps

- Field Study 2025
- Operational 2026



National and International Assessments - NAEP



Whom do I contact?

NAEP Field Representative

Contact using information provided in NAEP AMS and via Email

- School Delay or closing
- Need to reschedule
- Change in Assessment Logistics

Maine DOE NAEP Coordinator

(207) 530-1355

regina.lewis@maine.gov

- AMS account creation
- Acquiring AMS access for additional staff
- Questions related to assessment accessibility, exclusion, and refusals
- Policy related questions
- Any problems that NAEP Field Representative and NAEP Helpdesk are unable to answer

NAEP AMS Helpdesk

(800) 283-6237

naephelp@westat.com

- Technical issues with AMS
- Password recovery not working
- Unable to select or manage tiles
- Student name changes

WIDA ACCESS and Alternate ACCESS

Interim Coordinator: Jodi Bossio-Smith

ACCESS and Alternate ACCESS for ELLs

Maine's general and alternate assessments of English language proficiency, for students identified as multilingual learners

- 3/12/24 Deadline for Shipping Completed Test Materials to DRC
- 4/30/24 ACCESS Reports and Data Files Available – Online in WIDA AMS
- 5/16/24 ACCESS Reports Available in District – Printed
- 9/13/24 WIDA Alternate ACCESS Reports and Data Files Available – Online in WIDA AMS
- 10/2/24 WIDA Alternate ACCESS Reports Available in District - Printed

WIDA ACCESS & Alternate ACCESS

Whom do I contact?

WIDA Client Services Center

1-866-276-7735

Help@WIDA.us

- WIDA Secure Portal account creation
- Assessment training modules
- Self-paced e-learning resources

Data Recognition Corporation (DRC)

1-855-787-9615

WIDA@datarecognitioncorp.com

- WIDA AMS account creation
- Technical issues with the WIDA AMS platform, including finding students, assigning accommodations, and creating test sessions
- Technical issues with the installation of the DRC lockdown browser

Maine DOE Assessment Team

(207) 530-1462

Jodi.Bossio-smith@maine.gov

- Questions related to assessment coordination, administration, and accessibility
- Policy-related questions
- Fixing a student who appears on your assessment roster in NEO but does not appear in WIDA AMS
 - *Please wait at least 36 hours after making the update in Synergy.*
- Any problems that WIDA and DRC Customer Services are unable to answer

MSAA

Interim Coordinator: Jodi Bossio-Smith

Multi-State Alternate Assessment

Maine's alternate assessments based on alternate academic achievement standards in reading, math and science

Administration Window:
March 11 – April 26, 2024

- Participation of all students is a federal requirement
- Targeted outreach to Maine SAUs over the last 7 weeks
- In-person technical assistance visits currently underway
- Support needed from District Assessment Coordinators

Multi-State Alternate Assessment

Whom do I contact?

MSAA Service Desk

866-834-8879

MSAAServiceCenter@cognia.org

[Live Chat available](#)

- Issues with the platform
- Questions around account permissions/creation
- Mandatory training modules and quiz
- Help logging in

Maine DOE Assessment Team

(207) 530-1462

Jodi.Bossio-smith@maine.gov (interim coordinator)

- Questions related to assessment coordination, administration, and accessibility
- Policy-related questions
- Fixing a student who appears on your assessment roster in NEO but does not appear in the MSAA Platform
 - *Please wait at least 36 hours after making the update in Synergy.*
- Any problems that MSAA Service Desk is unable to answer

**Assessment Team
Lunch 'n' Learn Office Hours**

Q&A



Stay Connected!

Find Us Online!



www.maine.gov/doe



@MaineDOEComm



@mainedepted



@mdoenews



@MaineDepartmentofEducation1