

MAINE DEPARTMENT
OF EDUCATION (DOE)

Assessment Lunch & Learn Office Hours

January 10, 2023

Please post questions you may have in the chat box – we will work to answer them during the session and add them to a Q&A document.

We will begin shortly.

Presented by: The Assessment Team





Jodi Bossio-Smith
Director of Assessment
Interim Alternate and
ELP Assessments Coordinator



Krista Averill
General Assessments
Coordinator



Dr. Regina Lewis
NAEP & International Assessments



Leah Jarvis
Business Analyst



Kalua Wilson
Office Specialist

Welcome to the Maine DOE

Meet Our Team

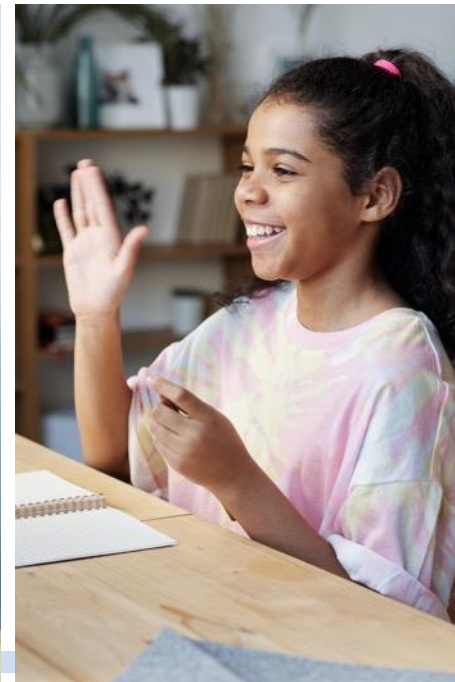
Assessment

Today's Agenda

General Updates:

- Maine Through Year and Maine Science Assessments
- National and International Assessments
- ELP Assessment
- MSAA

Mission & Vision



To promote the best learning opportunities for all Maine students by providing information, guidance, and support to our schools, educators, and leaders and by providing adequate and equitable school funding and resources.

Technical Assistance

[SAU Request Form for Technical Assistance](#)

Available to all SAUs upon request

Targeted technical assistance continues to focus on participation across the MEA



Assessment Name	Assessment Dates	Window	Delivery Method	Intended For
Access for ELLs (English Language Proficiency)	January 8, 2024 - March 1, 2024	8 Weeks	Kindergarten: Paper Grade 1-12: Online	English Learners K-12
Alternate Access for ELLs (English Language Proficiency)	January 8, 2024 - March 1, 2024	8 Weeks	Paper/Pencil	English Learners in Grades K-12 with Significant Cognitive Disabilities
Maine Through Year Assessment: Mathematics & Reading	Fall (Required): October 2, 2023 - November 3, 2023 Winter (Optional): January 2, 2024 - February 16, 2024 Spring (Required): April 22, 2024 - May 31, 2024	Fall: 4 Weeks Winter and Spring: 6 Weeks	Online	Students in Grades 3-8, & 2nd Year of High School
Maine Science Assessment	May 13, 2024 - May 24, 2024	2 Weeks	Online	Grades, 5, 8, & 3rd Year of High School
MSAA: Mathematics & ELA/Literacy	March 11, 2024 - April 26, 2024	6 Weeks	Online	Students with Significant Cognitive Disabilities; Grades 3-8, & 3rd Year of High School
MSAA Science	March 11, 2024 - April 26, 2024	6 Weeks	Online	Students with Significant Cognitive Disabilities; Grades 5, 8, & 3rd Year of High School

Maine Educational Assessments (MEA)

2023-24 Assessment Calendar

National & International 2023-24 Assessment Calendar

Assessment Name	Assessment Dates	Intended For
National Assessment of Educational Progress (NAEP)	January 29, 2024 - March 8, 2024	Mathematics and Reading Grades 4, 8, & 12 and Science Grade 8 at sampled schools
Teaching and Learning International Survey (TALIS)	March - April 2024	International survey of principals and teachers at grades 7, 8, and 9 at sampled schools
Program for International Students Assessment (PISA) Field Test	March - April 2024	Math, Reading, and Science age 15 at sampled schools
International Computer Literacy & Information Literacy Study (ICILS)	N/A	Grade 8, Computer & Information Literacy at sampled schools
Progress in International Reading Literacy (PIRLS)	N/A	Grade 4 Reading achievement in literacy experience and reading to acquire and use information at sampled schools
Trends in Mathematics & Science Study (TIMSS)	N/A	Grades 4 & 8 Mathematics & Reading at sampled schools

Data Requests

- Suppressed data for 2017-18 to 2021-22 are currently available in the [ESSA Dashboard](#).
- Legacy data (suppressed data for years prior to those available in the ESSA Dashboard) are available [here](#).
- To access unsuppressed data from these years, please use the “Submit a Data Request” link at the bottom of the [Data Warehouse page](#).
- SAUs have access to
 - Spring 2023 Maine Science Assessment data in the Kite Reporting Platform
 - Spring 2023, Fall 2023, and (if you have assessed) Winter 2024 Maine Through Year Assessment data in the Acacia Platform
 - Spring 2023 WIDA ACCESS data in WIDA AMS

Maine Through Year Assessment

Maine Through Year Assessment Climate Survey

Intended audience: SAU and school leadership in various roles, educators, and others (as appropriate)

Topic: *Did your students' scores on the Maine Through Year Assessment meet your expectations based on the students' performance in the classroom?*

Link: <https://forms.office.com/g/aptGjfSAdX> - *Will be posted in the meeting chat, in Q&A document, and sent to the MEA listserv later today.*

Please share with all administrators in your SAU as well as all reading and math teachers and other professionals who work with Maine Through Year Assessment results data.

Maine Through Year Assessment

Fall Administration: State RIT Average

Please note that the national averages are from the [MAP Growth 2020 norms](#) and are based on 4 weeks of instruction.

Dependent on when Maine SAUs chose to assess during the administration window, the actual number of weeks of instruction may vary.

Standard error of measurement for RIT is typically +/- 3 RIT points.

Subject	Grade	Maine Average RIT	National Average RIT
Mathematics	3	188	188
Mathematics	4	198	200
Mathematics	5	206	209
Mathematics	6	212	215
Mathematics	7	218	220
Mathematics	8	223	225
Mathematics	HS	230	229
Reading	3	189	187
Reading	4	198	197
Reading	5	205	204
Reading	6	211	210
Reading	7	215	214
Reading	8	218	218
Reading	HS	224	221

Maine Through Year Assessment

Optional Winter Administration

- January 2 – February 16, 2024
- [Training Slides](#)
 - The synchronous, virtual assessment coordinator training will continue in Spring 2024.

Maine Through Year Assessment

Optional Winter Administration

Common Question 1

Does my SAU/school have to administer the Maine Through Year Assessment through Acacia or can we administer MAP Growth?

The Maine Through Year Assessment is administered through the Acacia platform. Because MAP Growth is no longer a part of the state assessment program, it is only available to those SAUs who have independently purchased the MAP Growth product. Maine DOE neither promotes nor prevents SAUs' purchasing of MAP Growth, and there is no policy on which assessment an SAU administers in the winter.

Two considerations:

- 1) The diagnostic portion of the spring Through Year Assessment starts at the ability level of the last Through Year Assessment administration. If MAP Growth is administered in winter, the spring diagnostic portion will start at the fall RIT score ability level.
- 2) MAP Growth reports will be available within 24 hours only for those administering MAP Growth. MAP Growth reports will be available to those taking the Maine Through Year Assessment after the close of the administration window (February 16).

Maine Through Year Assessment

Optional Winter Administration

Common Question 2

I'm noticing that accommodations, supports, and groups I entered in Fall 2023 are missing. Why?

At this time, the Acacia platform requires that accommodations and supports be assigned to the assessment administration rather than to the student. As a result, accommodations and supports need to be re-entered with each administration.

Similarly, Manage Online Testing groups and Reporting groups are created by administration rather than for the academic year. NWEA has indicated that expanding group assignments to apply across administrations is an enhancement that is currently in the works.

Maine Through Year Assessment: *Whom do I contact?*

NWEA Maine Partner Support

(855) 430-1777

techsupport@nwea.org

- Technical issues with the Acacia platform
- Technical issues with the State Solutions Secure Browser
- Technical issues with the MARC (MAP Growth) platform, including rostering in MARC
- SAU Data Clean-Up Tasks

Maine DOE MEDMS Helpdesk

MEDMS.Helpdesk@maine.gov

(207) 624-6896

- Fixing a student who incorrectly appears or does not appear in your assessment roster in NEO
- Help determining if a student is eligible for the Maine Through Year Assessment, based on information entered by the SAU into Synergy

Maine DOE Assessment Team

Krista.Averill@maine.gov

(207) 215-6528

- Questions related to assessment content, accessibility, scoring, and reporting
- Policy-related questions
- Fixing a student who appears on your assessment roster in NEO but does not appear in Acacia
 - *Please wait at least 36 hours after making the update in Synergy.*
 - cc: Kalua.Wilson@maine.gov
- Any problems that NWEA Maine Partner Support or MEDMS Helpdesk are not able to resolve

Maine Through Year Assessment

Professional Learning Opportunities

[Requesting NWEA Professional Learning Sessions for Your School/SAU: Request Form](#)

- Accessing Reports: Teachers
 - Accessing Reports: Administrators
 - Using Multiple Data Sources to Inform Instruction
 - Using Achievement Level Descriptors to Ensure Rigor
 - Purpose & Benefits of the Through Year Assessment
 - Getting Your Teachers Ready for the Through Year Assessment
 - Getting Your Students Ready for the Through Year Assessment
- Statewide NWEA PL programming will resume in March.

Maine Through Year Assessment

Professional Learning Opportunities

Understanding Scores from the Maine Through Year Assessment

During this virtual workshop, participants will learn about the characteristics and purposes of the two score types produced by the Maine Through Year Assessment. Participants will interact with student RIT score and Maine-specific scale score data to develop a deeper understanding of the purpose and value of, as well as the similarities and differences between, these two measures of student performance.

- January 11, 3:30-5:00 PM ([Registration Link](#))
- February 8, 3:30-5:00 PM ([Registration Link](#))

Maine Science Assessment

Spring 2023 Reports

Reporting Platform and Score Interpretation Guides

- The [Reporting Platform User Guide](#) provides directions for adding, editing, and removing District Users and Building Users in the Kite platform as well as how to access the various reports within the platform.
- The [Score Interpretation Guide](#) provides information on scaled scores, achievement levels, subdiscipline reporting, overview of reports (ISR, school summary, SAU summary, and roster report), and directions for importing and filtering of CSV roster files.

Getting Help Accessing Spring 2023 Maine Science Assessment Reports: Kite Service Desk

Resource	Location
Kite Service Desk Phone Number	855-277-9752
Kite Service Desk Email Address	Kite-support@ku.edu
Kite Live Chat in the Kite Educator Portal	https://educator-testlet.kiteaai.org/
Hours	8:00 am to 6:00 pm M-F Eastern Time Zone

Maine Science Assessment

Spring 2024 Trainings – Save the Date!

Lockdown Browser Installation

- Thursday, March 28th, 3:00-4:30 PM ([Registration Link](#))

Rostering in ADAM & Accessibility

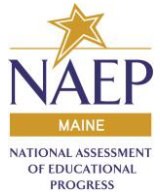
- Thursday, April 4th, 3:00-4:30 PM ([Registration Link](#))

Administration, Proctoring, & Accessibility

- Thursday, April 25th, 3:00-4:30 PM ([Registration Link](#))

All sessions will be recorded, and the recording will be posted on the Maine Science Support webpage: <https://mescience.zendesk.com/hc/en-us>

National and International Assessments - NAEP



Administration is approaching: January 29, 2024 – March 8, 2024

Overdue:

Schedule the Assessment Planning Meeting

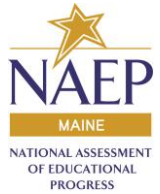
Urgent:

Provide Student Information and Assessment Logistics

December:

Notify parents/guardians - Translations

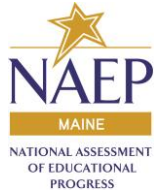
National and International Assessments - NAEP



January Tasks - School Coordinator

- Provide Student Information
 - Assign appropriate accommodations
 - Add other information as necessary
 - Examples of non-participants
 - Student does not attend any classes on this campus.
 - Student participates in the alternate assessments.
 - Student is newly arrived & has been enrolled in a US school for less than 1 year and cannot access the assessment.
- Meet with the NAEP Representative (Assessment Coordinator)

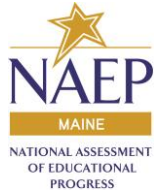
National and International Assessments - NAEP



January Tasks – Onsite Coordinator

- Meet with the NAEP Representative (Assessment Coordinator)
- Safelist URLs as required for NAEP – see NAEP AMS for Details
- Conduct Wi-Fi Checks
- Plan to be at the school on the day of the NAEP administration

National and International Assessments - NAEP

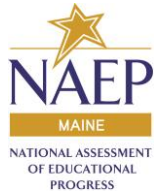


Inclusion - Students with Disabilities

- Only SD who participate in the state alternate assessment may be excluded from NAEP
- All other SD should participate with or without NAEP accommodations
- Only students on an IEP or Section 504 Plan can receive accommodations on NAEP

REMINDER – There are no OPT-OUTs for NAEP only Exclusions & Parent Refusals

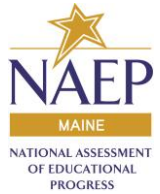
National and International Assessments - NAEP



Inclusion – Multi-lingual Learners (MLs/ELs)

- Only MLs (ELs) who have been enrolled in U.S. schools for less than 1 full academic year before the NAEP assessment and cannot access NAEP may be excluded from NAEP
- All other EL should participate in NAEP with or without NAEP accommodations
- Formerly EL cannot receive accommodations on NAEP

National and International Assessments - NAEP



Troubleshooting

- If an accommodation is not listed, please review the inclusion policies and reach out.
- *When referring to students via email or phone **please provide the line number***

Please email regina.lewis@maine.gov with any questions.

Zoom meetings are available on request.

NAEP AMS Helpdesk - Phone: 1-800-283-6237, Email - naephelp@westat.com

8:00 am - 8:00 pm ET, Monday - Friday



ACCESS and Alternate ACCESS for ELLs

Maine's general and alternate assessments of English language proficiency, for students identified as multilingual learners

Administration Window:
January 8 – March 3, 2024

The ACCESS Rosters for each SAU and school are created based on Synergy enrollment. If a student does not have an ML Start Date in Synergy, those students will not be in WIDA AMS.

ACCESS and Alternate ACCESS for ELLs

Maine's general and alternate assessments of English language proficiency, for students identified as multilingual learners

Administration Window:
January 8 – March 3, 2024

There is a daily change file processed by Maine DOE that captures enrollment updates such as new/transfer students and enters them into the WIDA AMS platform. However, there is no functionality in WIDA AMS to delete a student who is no longer enrolled. SAUs do not need to take action in WIDA AMS if there is a multilingual learner who is no longer enrolled and will therefore not be participating in ACCESS. Those test sessions will remain in “Not Started” status and reports will not be generated for the student. The student/s will not be counted as non-participants for the former SAU, provided that the enrollment exit date in Synergy is prior to the ESEA Demographic date

WIDA ACCESS & Alternate ACCESS

Whom do I contact?

WIDA Client Services Center

1-866-276-7735

Help@WIDA.us

- WIDA Secure Portal account creation
- Assessment training modules
- Self-paced e-learning resources

Data Recognition Corporation (DRC)

1-855-787-9615

WIDA@datarecognitioncorp.com

- WIDA AMS account creation
- Technical issues with the WIDA AMS platform, including finding students, assigning accommodations, and creating test sessions
- Technical issues with the installation of the DRC lockdown browser

Maine DOE Assessment Team

(207) 530-1462

Jodi.Bossio-smith@maine.gov

- Questions related to assessment coordination, administration, and accessibility
- Policy-related questions
- Fixing a student who appears on your assessment roster in NEO but does not appear in WIDA AMS
 - *Please wait at least 36 hours after making the update in Synergy.*
 - cc: Kalua.Wilson@maine.gov
- Any problems that WIDA and DRC Customer Services are unable to answer

Multi-State Alternate Assessment

Maine's alternate assessments based on alternate academic achievement standards in reading, math and science

Administration Window:
March 11 – April 26, 2024

- **Survey sent to Special Education Directors on 1/2/24 to identify Spring 2024 MSAA Coordinators**
- Test Administration Manual and User Guides for test coordinators and administrators are now available on the **Maine DOE/MSAA webpage**
- **Updated alternate assessment timeline** for the field now available on the Maine DOE/MSAA webpage

**Assessment Team
Lunch 'n' Learn Office Hours**

Q&A



Stay Connected!

Find Us Online!



www.maine.gov/doe



@MaineDOEComm



@mainedepted



@mdoenews



@MaineDepartmentofEducation1