

Welcome to Public School: Building High-Quality Transitions

Module 3 Engaging with Your Community

**Maine Department of Education
Maine Department of Health and Human Services
Maine Children's Cabinet**



Objectives

- Build an understanding of the different connections across a community that help strengthen transitions
- Gain knowledge around community and school resources that can help establish strong home-school connections
- Establish an understanding of building relationships and alignment with sending programs, such as Head Start, private and family childcare, and community preschool programs



School readiness involves more than just children. School readiness is about children, families, early environments, schools, and communities. -

Maxwell & Clifford 2004



What Research Shows Us...

- When children experience discontinuities between early learning programs and kindergarten, they may be at greater risk for academic failure and social adjustment problems (Conyer, Reynold & Ou, 2003)
- Research using a nationally representative sample found that a simple increase in TTK practices predicted prosocial behavior in kindergarten (Cook & Coley, 2017).
- One study of TTK efforts found that the only practices significantly linked to children's outcomes were in-person meetings between Head Start and kindergarten teachers (Cook & Coley, 2019).
- Time-intensive strategies, such as shared professional learning among ECE and kindergarten teachers, have been found to be the least common strategies enacted (Little et al., 2016).

Transition to Kindergarten (TTK)



Reflection and Something New

Use this Notes Page as a tool for capturing ideas and main thoughts on the video in the next slide and take note of ideas for new transition practices that would be helpful to families in your community.

NOTES PAGE

VIDEO: EDUCATORS SUPPORTING SUCCESSFUL TRANSITIONS TO KINDERGARTEN (ECLKC WEBSITE)

LISTEN FOR IDEAS AND STRATEGIES TO TAKE NOTE OF THAT MIGHT OFFER YOUR COMMUNITY IDEAS FOR IDENTIFYING NEW TRANSITION PRACTICES THAT WOULD BE HELPFUL TO FAMILIES. BE PREPARED TO DISCUSS THE NOTES YOU HAVE TAKEN.

SHARE INFORMATION		BUILD POSITIVE RELATIONSHIPS	
PREPARE CHILDREN FOR WHAT TO EXPECT:		GET TO KNOW THE UNIQUE STRENGTHS OF FAMILIES:	
COMMUNICATE WITH FAMILIES IN THEIR HOME LANGUAGES:		PARTNER WITH RECEIVING ELEMENTARY SCHOOLS:	
SHARE DATA WITH FAMILIES AND RECEIVING ELEMENTARY SCHOOLS			
ALIGNING PROGRAMS			
PARTICIPATE IN JOINT PROFESSIONAL DEVELOPMENT:			
PARTNER AROUND YEAR-LONG TRANSITION ACTIVITIES:			
SUPPORT KINDERGARTEN READINESS WITH CURRICULUM AND ASSESSMENTS THAT SUPPORT KINDERGARTEN READINESS:			



Video Activity



This video is from Head Start; while you are watching, use the Notes Page to capture ideas for collaborating with sending community providers.

Overarching Document

The Ready Community

A community that is ready to support its children ensures access to health care, provides quality childcare and early education, and invests in resources for families. –IES

THE READY COMMUNITY
An Important Component of Preparing a School-Ready Child

What is school readiness?
School readiness involves more than just children. In the broadest sense, school readiness is about children, families, early environments, schools, and communities. Children are not innately “ready” or “not ready” for school. Their skills and development are strongly influenced by their families and through their interactions with other people and environments before coming to school.
A community that is ready to support its children **ensures access to health care, provides quality childcare and early education, and invests in resources for families.**

School readiness occurs when children have the skills, knowledge, and attitudes necessary for success in primary school, later learning, and life. Physical, cognitive, social, and emotional development are essential ingredients of school readiness. School readiness refers not only to ready children, but to ready communities, families, and schools.

Ensures Access to Health Care
A ready community helps ensure that children have access to health care, immunizations, and nutrition. Meeting these basic needs enhances engagement in learning and fosters better attendance at school.

- Making the Link Between Health and School Readiness
- Health Services that Impact School Readiness
- Children's Access to Health Care
- Healthy Children are Ready to Learn

Provides Access to Quality Childcare and Early Education
A ready community helps ensure that families have access to quality childcare and early education. A quality early education program supports a child's development physically, socially, emotionally, in language and literacy, and in thinking skills.

- Supporting Working Families with Access to High-Quality Early Care and Education
- Defining and Measuring Access to High-Quality Early Care and Education (ECE): A Guidebook for Policymakers and Researchers
- The Importance of Early Childhood Education

Invests in Resources for Families
A ready community invests in resources and activities that support families and promote school readiness. It is critical that communities support schools so they are ready to meet the needs of children. It is important for communities to support families so that children enter school with a firm foundation for learning.

- Strengthening Developmental Screening for Children Involved in Child Welfare Systems
- A Two-Generation Human Capital Approach to Anti-Poverty Policy
- Toolkit for Engaging Families and the Community as Partners
- Family and Community Partnerships for School Readiness
- Helping Communities Get Children Ready for School and Schools Ready for Children

Source: Institution of Education Sciences (IES)

Building a Collaborative Framework...

Consider the settings, environments, and people that are all interconnected in the child's life, as they transition from an early learning program or home setting to kindergarten; these might include:

Families and
Caregivers

Childcare centers
& Providers

Public or
private schools

Recreational
Centers &
Programs

Local
Playgroups

All of these pieces of a child's community are an important part of their world, and the experiences they bring with them.

Who Are Your Community Partners?

Each community encompasses their own unique partners.

Take a moment and create a list of entities in your own school's community who may become beneficial partners, with a few reasons explaining your thoughts.

Here are some you may or may not have considered:

- ✓ Healthcare providers (medical/dental)
- ✓ Community organizations that the child/family interacts with
- ✓ Sending childcare/preschool program
- ✓ Grocery stores and restaurants
- ✓ Library
- ✓ YMCA/Community Centers, public pool or playground
- ✓ Children's Museum
- ✓ Houses of Worship
- ✓ Cultural Organizations

Community Connections



Building strong community connections enables:

- Continuity through the transition process
 - Support for outreach
 - Cohesive services



How Might We Engage Our Community?

ACTIVITY:

Choose two or three potential partners from your list and brainstorm about **how** they could support your school/district around reaching out to incoming families, connecting families with resources and/or providing space for gatherings for incoming children and families.



How Do We Engage Our Partners?

Let's share some of the ideas for partnering in your community.

And other ideas:

- Hang posters at local businesses can inform families of contact information and important dates around enrollment
- Host collaborative transition events in the community, such as play and learn groups at a community center or library story hour
- Work with a retail or grocery store to distribute pamphlets that include school supply lists, contact information and/or important dates
- Engage with private and family childcares and center-based care centers
- Collaborate with community agencies that work with families to distribute information.

Healthy Family, Healthy Child

Schools and communities that are ready to support children...

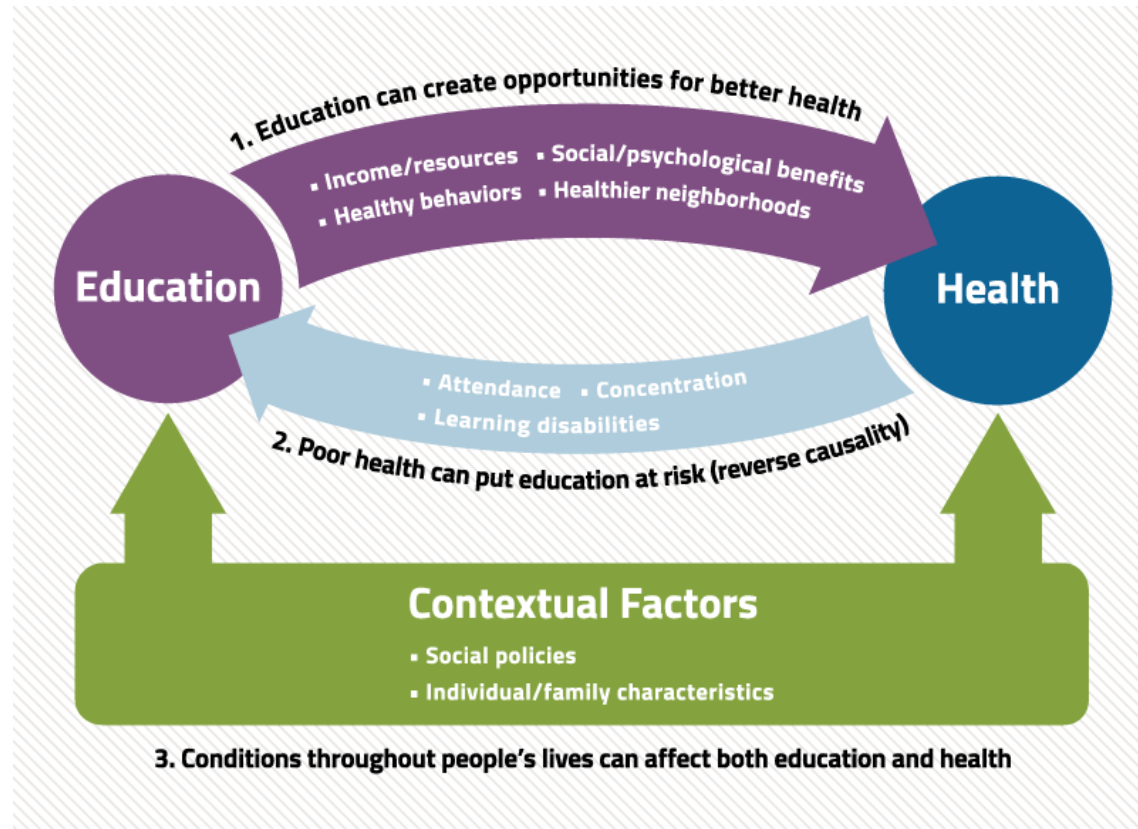
- Understand that children's health and well-being can affect learning
 - Help ensure Access to Health Care
 - Invest in Resources for Families
- Provide Access to Quality Childcare and Early Education

School readiness is enhanced by positive early childhood conditions—e.g., fetal wellbeing, social-emotional development, family socioeconomic status, neighborhood socioeconomic status, and early childhood education—but some of these same assets also appear to be vital to the health and development of children and their future risk of adopting unhealthy behaviors and adult diseases.

-<https://societyhealth.vcu.edu/work/the-projects/why-education-matters-to-health-exploring-the-causes.html>

The relationship between education and health is never a simple one. Poor health not only results from lower educational attainment, but it can also cause educational setbacks and interfere with schooling.

-<https://societyhealth.vcu.edu/work/the-projects/why-education-matters-to-health-exploring-the-causes.html>



Health and Learning Connection

- How do you know that children are healthy and ready to learn? What data do you use?
- How do you communicate the connection between children's health and learning outcomes to staff and families?
- How do you screen for and manage health concerns that impact school success?
- How do you make use of community resources to support children's ongoing health and wellness?

The Ready Community Invests in Resources for Families

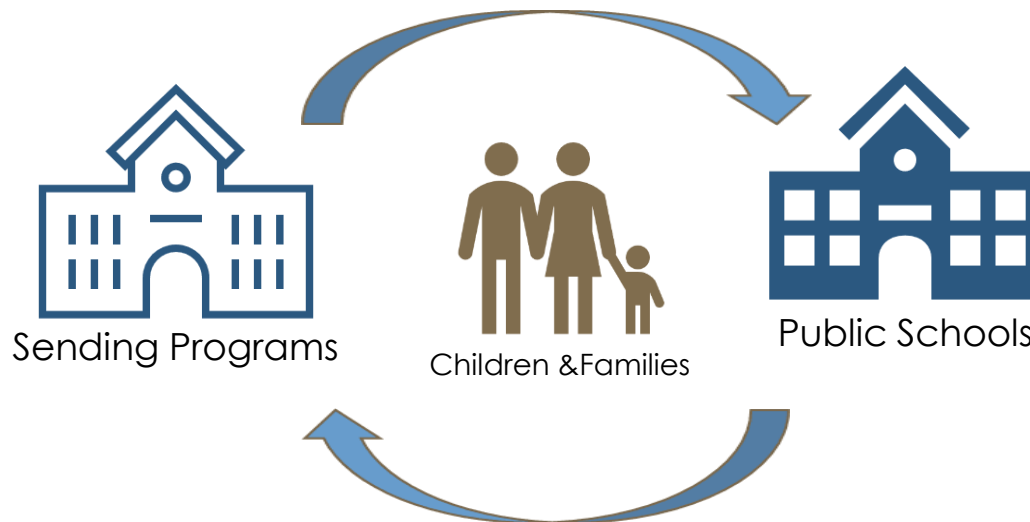
- A ready community invests in resources and activities that support families and promote school readiness.
- It is important for communities to support families so that children enter school with a firm foundation for learning.
- It is critical that communities support schools, so they are ready to meet the needs of children.

Quick activity: Brainstorm 1-3 ideas about how your community and school partner around resources for families

Community ECE Provider Partnerships

One of the most important Community Partners you will have may be the sending preschool and childcare programs. These may include:

- Private Preschool and childcare centers
- Head Start Programs
- Family/in home childcare



Developing Relationships: Sending Program - Receiving School

- Working together to identify information that becomes part of transition packets that follow children to school
- Sharing of assessment information (skill inventory)
- Collaborating on needs, culture and interests unique to each family and child
- Informing parents and caregivers can support families in engaging in transition activities with shared scheduling and information between programs

What are the Benefits?



- 1) Working together provides continuity
- 2) Sharing of children's assessments informs schools
- 3) Alignment of activities within programs
- 4) Shared professional development



Tying It All Together

Transitions can be strengthened when public schools reach out to their community.

Working with private and community caregivers, including preschools, childcares, family childcares, faith-based preschools and Head Start programs, information is shared to inform educators and enable families and children to have successful transitions.

For More Information

Head to the **Maine Department of Education's** *Transitioning into Kindergarten* webpages

Resources
for
Providers

Resources
for
Educators

Transition
Plan
templates

Information
and tip-sheets
for sharing
with families

Link:

www.maine.gov/doe/learning/earlychildhood/transitions

Welcome to Public School: Building High-Quality Transitions

Module 2 Student and Family Engagement

- [The Ready Child](#)
- [The Ready Family](#)

Module 3 School and Community Engagement

- [The Ready Community](#)

Module 4 Building Transition Teams and Plans

- [The Ready School](#)

Questions?

Thoughts?

Digging
Deeper...

